



The Better Way. Every Day. **swarco** 

MSID

VM22751 v2
Belper Town Council
MVAS Warning Sign Quotation

www.swarco.com

INTRODUCTION

Thank you for your much valued enquiry and for the opportunity to submit a proposal for this project.

SWARCO TRAFFIC Ltd has operated in the UK for 30 years as a specialist supplier of Traffic Technology and associated Electronic Signs. SWARCO's range of LED traffic signs are designed in accordance with the latest Department for Transport specifications and hold TOPAS TR2516B certification. They are also CE marked to EN12966-1:2005+A1:2009.

The MVAS has many features that will benefit your project;

The Moveable Vehicle Activated Sign (MVAS) initiative is a locally managed scheme where vehicle activated safety signs can be purchased by the Parish/Town Council and moved around the village to pre-agreed locations, fixed either onto existing or new posts.

By moving the sign around the village, drivers do not become indifferent about the sign as can happen with fixed signs. This helps encourage safer driving and improve road safety in sensitive areas.

The data recorded by the internal MVD (Microwave Vehicle Detection) can be downloaded to a laptop via onboard wi-fi. This information can be used by Derbyshire County Council when planning longer term speed strategies.

The latest version of MVAS features high capacity solar power specifications. Solar powered signs are self-sufficient, with the power solution calculated based on up to 7 days without direct sunlight onto the solar panel as the sign is powered by the onboard gel-acid battery.

On MSID, the speed selection is made via the onboard browser interface, accessible by authorised personnel via the wi-fi connection. This terminal interface also allows a 'data only' setting.

SCOPE OF WORKS – SIGN TYPE 4 (THANK YOU/SLOW DOWN MSID)

This quotation has been prepared based on the supply of the following;

- 1 no Mobile Vehicle Activated Sign to S-24-r-088-ST-DHP including post-mounted solar panel on stainless steel bracket with 22Ah gel-acid battery set mounted within sign enclosure
- 6 no post installation kits, each comprising of 1 no post bracket, 2 no Tamtorque clips & 1 no padlock
- 1 no Tamtorque tool
- Palletised delivery of sign with associated equipment

The value for this project in either power supply variant is £3,525.00 exc VAT.

A wide variety of mounting equipment, site services and other options are available, please refer to Supporting Information document for details.

All SWARCO moveable signs include 5-year warranty as standard. Please see the warranty & maintenance page for further information.



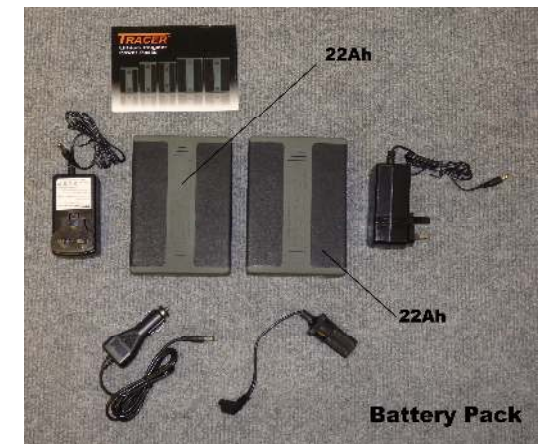
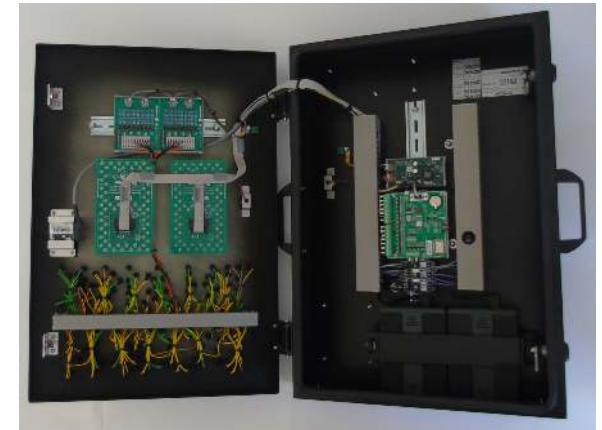
TYPE 4 BATTERY-POWERED MSID PRICING SCHEDULE

Item	Description	Value £	Qty	Total £
4	Moveable VAS to S-24-r-088-ST-DHP specification	3,200.00	1	3,200.00
	Post mounting bracket	15.00	6	
	Tamtorque clip (70-100mm post unless requested otherwise)	3.75	12	225.00
	Security padlock	15.00	6	
	Tamtorque tool	20.00	1	20.00
	Crown key	10.00	1	10.00
	Delivery (per pallet based on maximum 4 signs per pallet)	70.00	1	70.00
		Total		

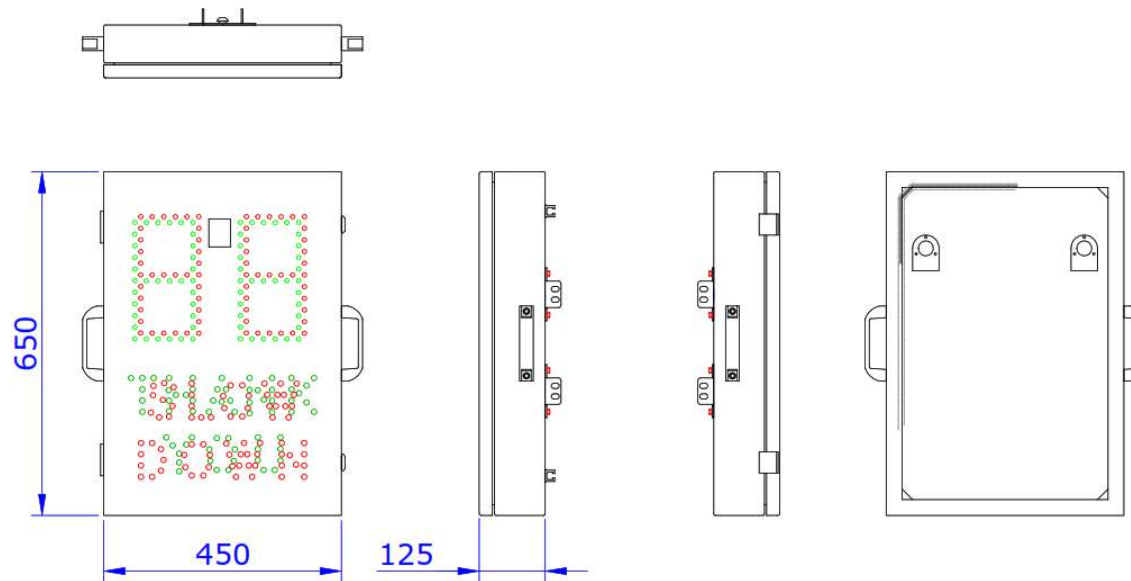
Sign Operation

The sign is MVD activated by approaching vehicles exceeding a pre-set speed threshold; the detection speed and on time for the signs are set in the controller board. When vehicles approach the sign, the vehicle speed along with the applicable message is displayed for the time set within the controller (see 'display settings' on the following page).

The sign features a configurable interface for speed detection & activation. The interface allows speeds to be set for the speed limit along with an upper threshold speed, above which the speed is not displayed to prevent bad driver behaviour. The configuration can also include a 'data only' setting (usually preset to 99mph) that allows the sign to collect data without activating the display to establish a baseline for driver behaviour at the site.



TYPE 4 MSID SIGN DESIGN



Sign Specification	
Width	450mm
Height	650mm
Area	0.29sq.m
Speed display	240mm
Speed colour	Red/Green
Background	Black
Weight	11 Kg

LED Specification	
'88' 2 x 34 PCB	Red
'88' 2 x 34 PCB	Green
'THANK'	43 Green
'YOU'	23 Green
'SLOW'	36 Red
'DOWN'	40 Red

Display Settings (based on 30mph nom set speed limit)



Display 1
Below speed limit



Display 2
Within 10% above speed limit



Display 3
Over 10% above speed limit, below upper limit



Display 4
Above upper limit

TYPE 4 SOLAR MSID ENERGY SYSTEM

The solar solution of 1 no 80W panel and 1 no 22Ah battery pack offered for sign types 3 & 4 has been calculated to provide up to 8,000 activations per day with a 7-day battery backup.

Each sign and solar kit incorporates a pre-wired plug & socket arrangement for ease of installation & maintenance.

The solar MSID includes 2 post mounting kits along with 2 security padlocks per sign set, allowing the sign and solar panel to be mounted on a single pole. The solar panel can then be orientated seperately from the sign to ensure best solar alignment.

When choosing a site to install a solar powered VAS sign the location needs to be carefully planned, ideally a good open South facing aspect with no overhanging trees or buildings. The solar panel depends on direct sun light to fully maintain the battery power within the sign.



This is a good example of a location for solar to be erected!



These are examples of a poor location for solar to be erected!



POST INSTALLATION AND FIXING EQUIPMENT

Item	Post Installation Kit	Value £	Qty	Total £
5a	Tamtorque clip, diameter of post to be specified prior to processing order (5 sizes of clip available)	3.75	2	7.50
5b	Post bracket (to be used in conjunction with sign bracket)	15.00	1	15.00
			Total	22.50

Each post that the MVAS4 is to be fixed to requires a Post Installation Kit (right). The 2 no Tamtorque clips secure the post bracket to the post, using the Tamtorque tool available at Item 6b. The sign bracket locates into the post bracket and is secured via the 40mm brass padlock available at Item 6a.

NB – 2 Post Installation Kits required per sign for solar signs.

Item	Post Fixing Kit	Value £	Qty	Total £
6a	40mm Brass Padlock	15.00	1	15.00
6b	Tamtorque tool	20.00	1	20.00
				35.00

Each sign ordered requires a Post Fixing Toolkit (right). This includes a Tamtorque tool to install the sign onto posts using the Post Installation Kit and a padlock to secure the sign to the post.

Our main offers on the preceding pages include all of the above to suit a single sign installation on a single post. Additional post installation kits allow the signs to be moved easily between locations without removing the mounting equipment.



SITE SERVICES

Item	Site Services	Value £	Qty	Total £
7a	Installation by SWARCO Engineer of a single sign and sign bracket set, including commissioning of the sign at site.	220.00	1	220.00
7b	Installation of additional signs or sign bracket sets while at site (per single post)	68.75	1	68.75
7c	Device training while at site (available in conjunction with 7a if further training is required aside of the video tutorials)	380.00	1	380.00

Installation of signs by SWARCO engineers ensures that the sign (and solar panel, if selected) are correctly mounted and aligned and the sign is working correctly following initial startup.

Installation of the sign does not include product training, however parish representatives are welcome to attend while the sign is installed.

Sign mounting and simple startup demonstrations are available on the playlist below:

https://www.youtube.com/playlist?list=PLpV17XS0BiXq6N0wjF-thZEH9_jjC1huw



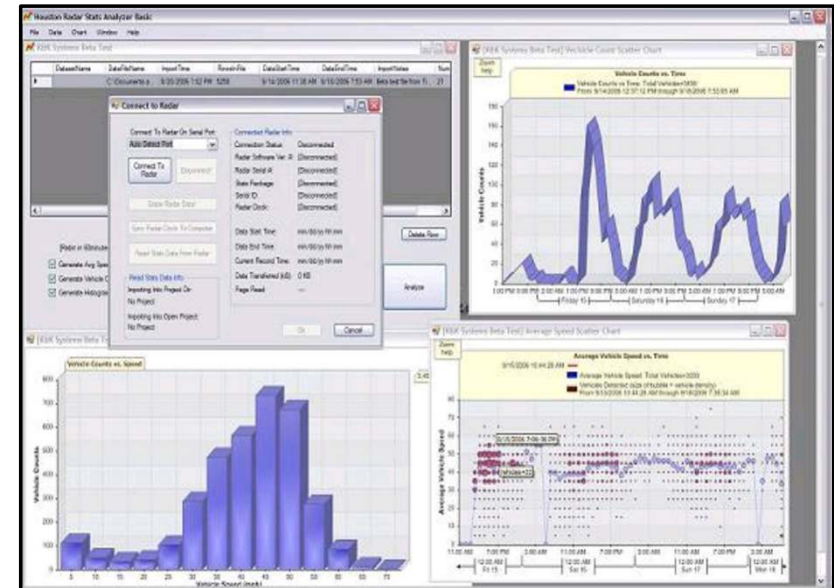
DATA LOGGING

Data logging is included as standard on all MVAS & MSID models. Data will be collected by or on behalf of Derbyshire County Council for the period of the trial.

The Windows © data software supplied with the radar collects the traffic data and offers various options to manipulate the data including export to Microsoft Excel.

Our support website is <https://www.swarco.com/companies/swarco-traffic-ltd> which contains links to manuals and software for vehicle activated signs.

Please note: Data collected from a sign MVD may not be fully representative on vehicle counting, due to queueing or dense traffic occlusion. The data recorded is designed to provide representative traffic behaviour trends for analysis via the software graphical or numerical outputs.



WARRANTY AND MAINTENANCE

Description	Warranty Cover (standard term only)	Warranty Contract (onward)	Maintenance Contract (from date of delivery)	
Qty Of Preventative Maintenance Inspections Per Year	0	0	1	
Costs Of Labour For Unscheduled Visits	N/A	N/A	Included	
Cost Of Replacement Of Faulty Parts	Included	Included	Included	
Level Of Response To Faults	5 Working Days	5 Working Days	5 Working Days	
Days Of Cover	Working Week Days	Working Week Days	Working Week Days	
Email Fault Support (office hours only) (Mon-Thur 08:30 - 17:00, Fri 08:30 - 16:00)	Included	Included	Included	
Price Per Sign Per Year	1 no	Included	£127.50	£287.50
	2 no		£127.50	£228.85
	3+ no		£127.50	£209.00

All equipment quoted is subject to a 5 Year warranty period from the date of delivery.

This return-to-base warranty allows for replacement of equipment failure due to manufacturing defects and systemic component faults. This does not include for wear, tear, accidental damage or vandalism.

A maintenance contract, including annual preventative maintenance visit can be requested at the point of order, with additional value as shown left.

Engineer callout to faults is available for additional value for warranty contract holders, to be confirmed once the nature of the fault is determined. Engineer callout is included in the maintenance contract value as shown.

SWARCO TRAFFIC LTD.

Western House Business Park
East Road
Melsonby
Richmond
DL10 5NF

T: +44(0)1748 824624
E: office.stl@swarco.com

www.swarco.com